

# CHOCOLAY TOWNSHIP



## TOWNSHIP INFORMATION

DECEMBER 2023



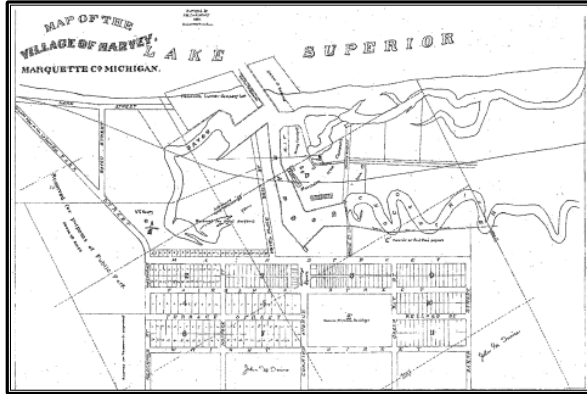
# CONTENTS

|   |           |  |           |
|---|-----------|--|-----------|
| <b>Township Information</b>                     | <b>1</b>  | Board of Review                                  | 11        |
| Township History                                | 1         | Planning Commission                              | 11        |
| About the Township                              | 2         | Zoning Board of Appeals (ZBA)                    | 11        |
| <b>Connecting with the Township</b>             | <b>3</b>  | Want to Get Involved?                            | 12        |
| Contact Numbers                                 | 3         | <b>Recreation</b>                                | <b>12</b> |
| Location  | 3         | ATV / ORV Trails                                 | 12        |
| Office and Police Department Hours              | 3         | Available Recreation Activities                  | 12        |
| <b>Important Contact Numbers</b>                | <b>3</b>  | Boat / Canoe / Kayak / Paddleboard Launch Sites  | 13        |
| Emergency                                       | 3         | Fishing Locations in the Township                | 14        |
| Customer Services                               | 4         | Non-Motorized Trails                             | 14        |
| Government                                      | 4         | Organized Sports Leagues                         | 14        |
| Utilities                                       | 4         | Public Hunting                                   | 15        |
| <b>Township Newsletter</b>                      | <b>5</b>  | Senior Citizens                                  | 15        |
| <b>Sign Displays Along Roads and Properties</b> | <b>5</b>  | Snowmobile Trail                                 | 15        |
| <b>Trash and Recycling Collection</b>           | <b>5</b>  | Water Trail                                      | 15        |
| Purchasing Garbage Tags                         | 5         | Recreation Attractions in and Around the Area    | 16        |
| Township Trash / Recycling Collection Schedule  | 5         | <b>Transportation</b>                            | <b>16</b> |
| Trash Questions                                 | 6         | Airports   | 16        |
| Landfill Permits                                | 6         | Public Transit                                   | 16        |
| General Recycling Information                   | 6         | Public Highways                                  | 16        |
| Recycling Questions                             | 6         | Commercial Ports                                 | 17        |
| <b>Local Ordinances</b>                         | <b>7</b>  | Rail Service                                     | 17        |
| Ordinance 22 Public Street Parking              | 7         | <b>Education</b>                                 | <b>17</b> |
| Ordinance 47 Watercraft Speed                   | 7         | <b>Local Businesses</b>                          | <b>17</b> |
| Ordinance 49 False Alarm                        | 7         | <b>Voting Information</b>                        | <b>17</b> |
| Ordinance 53 Traffic Code                       | 7         | <b>I Want to Build or Remodel ...</b>            | <b>18</b> |
| Ordinance 57 Bicycle And Snowmobile             | 8         | Building or Remodeling in the Township           | 18        |
| Ordinance 61 Firearms                           | 8         | Do I Need a Permit?                              | 18        |
| Ordinance 62 Animal Control                     | 8         | Structure Setbacks                               | 19        |
| Ordinance 65 Fireworks                          | 9         | Fence Permit                                     | 20        |
| Ordinance 66 Noise                              | 9         | <b>I Want to Connect to the Sewer System ...</b> | <b>20</b> |
| Ordinance 69 Nuisance, Noise and Vehicles       | 10        | <b>I Want to Have a Home Business ...</b>        | <b>20</b> |
| <b>Township Leadership and Meetings</b>         | <b>11</b> | <b>I Want to Rent My Property ...</b>            | <b>21</b> |
| Township Board                                  | 11        |  |           |



## TOWNSHIP INFORMATION

### Township History



**Village of Harvey in 1864**

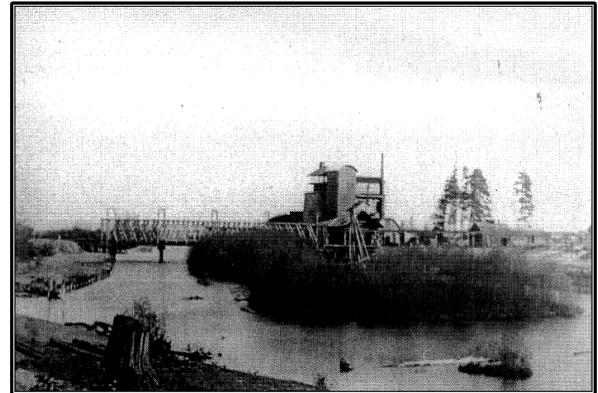
Chocolay Township became part of the history of the iron ore industry in 1860 when Charles T. Harvey directed the building of a blast furnace at the mouth of the Chocolay River. As a



**Early Charles T. Harvey home**

result, the Township became a political and geographical unit in 1860, and Harvey authorized the platting of the Village of Harvey in 1864.

Sawmills were built to support the furnace operation which experienced many economic ups and



**Furnace operation in Harvey circa 1860**

downs over the following years. Other businesses developed to support the growing community, such as dairies and service businesses. However, logging and farming were mainstays of the Township's economy for many years. The most successful farmers

settled on lands with hardwoods as opposed to pine, as the soils associated with the pines were not as productive.<sup>(1)</sup>

<sup>1</sup> Extracted from *Chocolay Township History then and now...* This history is available in book format at the Township office.



## About the Township

The Township is located on the southern shore of Lake Superior and contains almost 61 square miles of diverse natural features, of which about one square mile is water. Eleven miles of the Township border the Lake Superior shoreline, which contains spectacular stretches of beautiful sand beaches accessible to the public at the MDOT Welcome Center and at three MDOT turnouts on M-28 East. A cliff of exposed bedrock called “the Rock Cut” (directly across the highway from the Welcome Center) serves as the northern gateway to the Township and consists of some of the oldest exposed rocks in North America.



**The "Rock Cut"**

There are two major watersheds (Chocolay River and Sand River) within the Township boundaries that directly drain into Lake Superior. The entire Chocolay River watershed encompasses 159 square miles of which 41 square miles lie within the Township. The Sand River watershed covers 19 square miles, of which 13 square miles are within the Township borders.

Within these watersheds are 86 miles of rivers and streams in the Township which are used for recreation and attract residential development. Portions of the Chocolay and Sand River are designated trout streams by the State of Michigan, and fishermen come to these rivers seeking brook trout, brown trout, steelhead, and pink and chinook salmon. Both systems also provide an opportunity to catch Northern Pike and a variety of panfish.

The Township has about 561 acres of lakes and impoundments within its boundaries. Public access is available to Lake LeVasseur (access is off Kawbawgam Road) and the James D. Jeske wildlife flooding area (access is off Sand River Road).

Because of the proximity to Marquette, the Township is a particularly prominent place of residence for workers in Marquette County (third among all County jurisdictions) and workers in the City of Marquette (second among all County jurisdictions).<sup>(2)</sup>

---

<sup>2</sup> Extracted from the Township [Master Plan, 2021 Edition](#), pages 18 and 19. Click [Information](#), then [Township Plans](#), then [Master Plan, 2021 Edition](#) under [Current Plan](#) on the Township web site ([chocolay.gov](http://chocolay.gov)).

## CONNECTING WITH THE TOWNSHIP

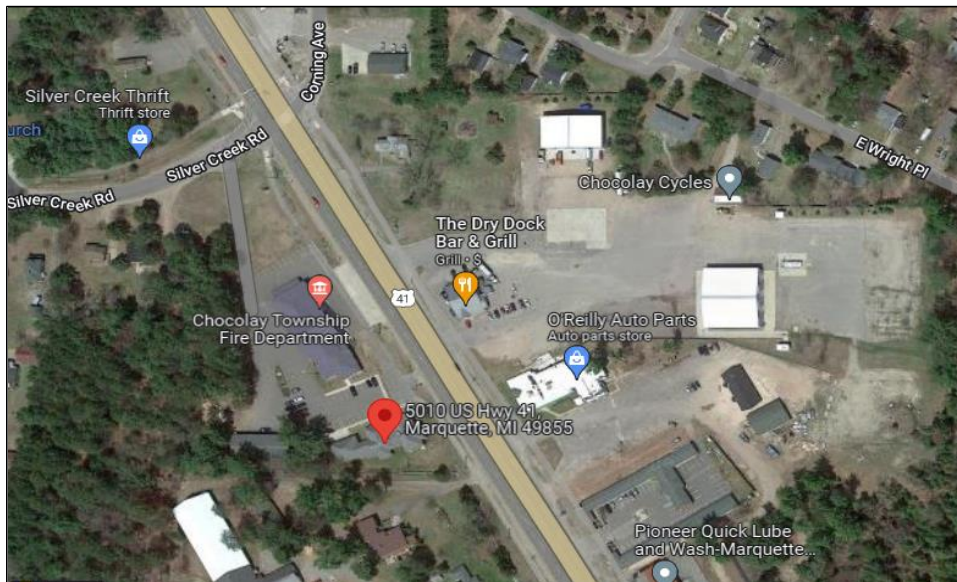
### Contact Numbers

Township office – 906.249.1448

Township Police Department (non-emergency) – 906.249.4040

### Location

The office is located at 5010 US 41 South, near the intersection of US 41 South and Silver Creek Road. The entry driveway to the office is from Silver Creek Road, behind the fire hall.



### Office and Police Department Hours

Office hours are Monday through Friday, 8:00 AM to 4:30 PM

Police Department office hours are Monday through Friday, 8:00 AM to 4:00 PM

## IMPORTANT CONTACT NUMBERS

### Emergency

|   |                             |
|---|-----------------------------|
| EMS, fire, or police                            | 911                         |
| Natural gas leak (SEMCO)                        | 888.427.1427                |
| Power outage (Alger-Delta Cooperative Electric) | 800.562.0950                |
| Power outage / power lines down (UPPCO)         | 906.449.2011 / 800.562.7809 |

## Customer Services

| Customer Service                   | Service Provided            | Contact Number                                       |
|------------------------------------|-----------------------------|--|
| AT & T Internet                    | Internet support            | 866.861.6075 (new service)<br>800.288.2020 (support) |
| AT & T DIRECTV                     | TV services                 | 855.967.2773   |
| DISH TV                            | satellite TV services       | 855.454.6770   |
| HughesNet                          | satellite TV services       | 877.563.5595   |
| Northern Michigan University (EAN) | Internet services           | 888.458.8668   |
| Peninsula Fiber Network (PFN)      | commercial fiber            | 906.226.2010   |
| Spectrum Communications            | cable TV / Internet / phone | 877.616.9824 residential<br>855.646.4498 commercial  |
| Waste Management                   | trash and recycle pick up   | 906.662.6065   |

## Government

| Agency                                 | Service Provided               | Contact Number              |
|--|--------------------------------|-----------------------------|
| Army Corps of Engineers                | beach and shoreline protection | 906.228.2833                |
| Chocolay Township office               | Township services              | 906.249.1448                |
| Chocolay Township Fire                 | non-emergency                  | 906.767.0143                |
| Chocolay Township Police               | non-emergency                  | 906.249.4040                |
| EGLE (formerly DEQ) – Marquette office | wetlands and water             | 906.228.4853                |
| FEMA Region 5                          | floodplain protection          | 312.408.5500                |
| Marquette County                       | general information            | 906.225.8150                |
| Marquette County Building Codes        | building permits               | 906.225.8180                |
| Marquette County Health Department     | well and septic                | 906.475.9977                |
| Marquette County Landfill              | waste disposal                 | 906.249.4125                |
| Marquette County Registrar of Deeds    | property deeds                 | 906.225.8415                |
| Marquette County Road Commission       | County roads / potholes        | 906.486.4491                |
| MDOT (Ishpeming TSC office)            | US 41 and M-28 corridor        | 906.485.4270 / 888.920.6368 |
| Michigan DNR                           | burn permit                    | 866.922.2876                |
| Michigan DNR (Marquette office)        | Marquette service center       | 906.228.6561                |

## Utilities

| Utility                                      | Service Provided        | Contact Number  |
|--|-------------------------|---|
| Alger-Delta Cooperative Electric Association | electric                | 906.428.4141<br>800.562.0950  |
| Marquette Board of Light and Power (BLP)     | electric                | 906.228.0311  |
| Miss Dig                                     | utility locator service | 811   |
| SEMCO  | natural gas             | 800.624.2019  |
| UPPCO  | electric                | 906.449.2013 / 800.562.7680<br>residential<br>906.449.2014 / 800.337.8445<br>commercial |

## TOWNSHIP NEWSLETTER

Each month, Township staff prepares a newsletter for the Township Board that outlines activities and projects completed during the previous month. The newsletter can be found by clicking [Resources](#), then [Community and Newsletters](#) on the Township website ([chocolay.gov](http://chocolay.gov)).

## SIGN DISPLAYS ALONG ROADS AND PROPERTIES

Real estate signs may be put up when a property is up for sale or when there is an open house. Other signs can be posted advertising one-time events (such as yard sales).

As a courtesy, please contact the property owner before putting up real estate signs in front of the property to make sure the owner approves of the sign placement.

Do not attach signs to utility poles or utility structures without permission from either BLP or Alger-Delta Cooperative.

Do not place signs of any kind in the road right-of-way without obtaining permission from MDOT or the County Road Commission.

## TRASH AND RECYCLING COLLECTION

### Purchasing Garbage Tags

All trash for Township pickup must be placed in a Waste Management-provided rollable container or in trash bags with a yellow Chocolay Township tag placed around the top of the bag where the bag ties.

If you do not have the Waste Management containers and wish to get them, please contact Waste Management at 906.662.6065 to set up an account and delivery of containers.

Yellow tags can be purchased in sheets of five at a cost of \$15.75 per sheet. The tags can be purchased at the following locations:

| Business                 | Address  | Contact Number |
|--------------------------|--|----------------|
| Chocolay Township office | 5010 US 41 South   | 906.249.1448   |
| Kassel's Korner          | 6400 US 41 South<br>intersection of US 41 South and County Road 480            | 906.249.1862   |
| Lofaro's Fresh Market    | 101 Carmen Drive<br>near the intersection of US 41 South and Cherry Creek Road | 906.249.3377   |
| Waste Management         | 910 W. Baraga Avenue   | 906.662.6065   |

### Township Trash / Recycling Collection Schedule

The Waste Management will collect residential trash / recycling if the following requirements are met:

- **All trash** for Township pickup **must be set out by 6:00 AM.**
- All trash for Township pickup must be placed in a Waste Management-provided rollable container or in trash bags with a yellow Chocolay Township sticker placed around the top of the bag where the bag ties.
- **Trash bags with yellow tags cannot exceed 32 gallons in capacity or 30 pounds in total weight; otherwise, the bags will not be picked up.**

The Township has trash collection on **Monday, Tuesday, Wednesday, and Thursday**. If a Waste Management holiday falls on one of these days, pick-up will be moved back one day (example: Monday would be picked up on Tuesday).





- **Monday pickup locations**

Roads north of Cherry Creek Road, including the village of Harvey. Lakewood Lane. Chocoday Downs Road, Brewer Drive, and Red Fox Trail.

- **Tuesday pickup locations**

US 41 South, south of County Road 480 and all roads connected to US 41 South, including Brookfield subdivision, Basal Road, and North Big Creek Road. Little Lake Road and all roads connected, including Truckey Court, Anna's Trail, Shimon Court, Karen Road, Poplar Trail, and Fassbender Road.

- **Wednesday pickup locations**

All of M-28 East and subdivisions on the south side of M-28 East. This also includes Chocoday River Trail and Shot Point Drive.

- **Thursday pickup locations**

All of County Road 480 from US 41 South to the Sands Township line

Briarwood subdivision

Both sides of US 41 South from Cherry Creek Road to County Road 480

Cherry Creek Road south of US 41 South to south of County Road 480

All streets off Cherry Creek Road

Remember to save money and help the environment by participating in the Township curbside recycling program.

## Trash Questions

Please call Waste Management at 906.662.6065 if you have questions regarding containers, if you have service-related questions, or if you have questions regarding your garbage pickup day.

## Landfill Permits

Township residents can haul garbage and construction items to the Marquette County Landfill by stopping at the Township office to complete a *Hauler's Agreement*. A \$15.00 monthly user fee will be charged, along with a \$50.00 deposit. Direct hauling can be a considerable savings to Township residents. Call the Township office for more information.

Cash or check only; no credit cards or debit cards are accepted for landfill permits. Two separate payments for user fee and deposit.

Compost and recyclables can be hauled to the Marquette County Landfill free of charge with no permit required.

## General Recycling Information

Recycling information is regularly updated on the Township web site (click [Recycling](#) on [chocoday.gov](#)). This information covers updates to recycling pickup, types of recyclables, and drop off locations for various types of recyclables, including brush and Christmas trees.

Recycling containers for cardboard and a separate container for glass are located behind the Township fire hall.

## Recycling Questions

Contact the Township at 906.249.1448 for any questions regarding recyclable materials or click [Recycling](#) on the Township web site ([chocoday.gov](#)) to use the *Material Wizard* provided by the Marquette County Solid Waste Management Authority.



## LOCAL ORDINANCES

The Township has ordinances, or rules, that are designed to protect the health, safety, and welfare of the Township community.

Below is a summary of each ordinance that affects individuals and property owners throughout the Township. A full version of each ordinance can be viewed on the Township website (click [Resources](#), then [Ordinances and Maps](#) on [chocolay.gov](http://chocolay.gov)).

### Ordinance 22 Public Street Parking

|                       |   |
|-----------------------|---|
| Purpose               | To regulate where motor vehicles can park on public streets in the Township   |
| Rule summary          | On-street parking is not permitted between 1 AM and 7 AM when there is snow on the ground or between November 15 and April 15. This is so that snow plowing of streets can occur without vehicles interfering with the plow trucks. |
| Violation consequence | The vehicle will be towed and stored at the owner's expense, and a fine up to \$100 can be given for each occurrence  |

### Ordinance 47 Watercraft Speed

|                       |  |
|-----------------------|--|
| Purpose               | To control watercraft speed on the Chocolay River                        |
| Rule summary          | All watercraft on the Chocolay River cannot exceed a slow-no wake speed. |
| Violation consequence | Fine of \$100 for each occurrence  |

### Ordinance 49 False Alarm

|                       |  |
|-----------------------|--|
| Purpose               | To prevent false alarms for the Township fire and police departments   |
| Rules summary         | No false alarms to either the fire or police department are permitted.<br>An alarm system may go off by accident under some circumstances (such as storm conditions, working on the alarm system, power loss to the alarm system, or local utility damage); these circumstances are not necessarily preventable, and will not be counted as a false alarm. |
| Violation consequence | Fines and fees will be determined on a case-by-case basis  |

### Ordinance 53 Traffic Code

|                       |  |
|-----------------------|--|
| Purpose               | To conform to Michigan traffic rules and regulations   |
| Rule summary          | Anyone driving a vehicle on roads in the Township must have a valid driver's license, be properly insured, and must follow all Michigan traffic rules and regulations. |
| Violation consequence | A ticket will be issued for each violation   |



## Ordinance 57 Bicycle And Snowmobile

|                       |   |
|-----------------------|---|
| Purpose               | To define bicycle and snowmobile regulations  |
| Rules summary         | <p>All bicycles ridden on designated Township bike paths will follow the Michigan traffic code.</p> <p>No motorized vehicles (other than wheelchairs or other mobility devices designed for a mobility-impaired person) are permitted on Township bike paths except snowmobiles.</p> <p>Snowmobiles can be operated on the portion of the bike path along US 41 South and M-28 East that lies in the MDOT right of way from December 1 to March 31 (look for the signs designating the correct location for snowmobiles to ride).</p> <p>Snowmobiles must obey all motor vehicle traffic laws, state snowmobile laws, local ordinances and must yield to all motor vehicles when using the authorized street and alley areas.</p> <p>Snowmobiles must follow the posted speed limit on portions of the trail that go through residential areas.</p> |
| Violation consequence | Fine of up to \$100 for each offense  |

## Ordinance 61 Firearms

|                       |   |
|-----------------------|---|
| Purpose               | To regulate where firearms can be used in the Township  |
| Rules summary         | <p>No shooting of any firearm is permitted within 450 feet of any occupied building, dwelling, house, residence, cabin, or any barn or other building used in connection with a farm operation without written permission from the owner, renter, or occupant of the property.</p> <p>No shooting is permitted across property lines without permission from the neighbor.</p> <p>No shooting is permitted in the following Township zoning districts (with the exception of a shotgun that is not loaded with slug, ball, buckshot or cut shell load):</p> <ul style="list-style-type: none"><li>■ Commercial (C)</li><li>■ High Density Residential (Harvey) (R-2)</li><li>■ Industrial (I)</li><li>■ Multi-Family Residential (MFR)</li><li>■ Planned Unit Development (PUD)</li><li>■ Single Family Residential (R-1)</li><li>■ Township properties (MP)</li><li>■ Waterfront Residential (WFR)</li></ul> |
| Violation consequence | Fine of up to \$500 for each offense  |

## Ordinance 62 Animal Control

|               |  |
|---------------|--|
| Purpose       | To control dogs and other animals within the Township  |
| Rules summary | <p><b>Dogs</b></p> <p>All dogs older than four months must have a current license and a current rabies vaccination. Dogs not hunting must have a collar on at all times with the license and rabies vaccination tags attached.</p> <p>Any animal that bites or scratches another animal or person will be held for ten days to ensure that the biting animal does not have rabies.</p> <p>All dogs must be under reasonable control of a responsible person.</p> <p>Animals that are not leashed can be seized on neighboring properties and given to law enforcement to be impounded.</p> <p>If you wish to have more than four dogs, cats, or other animals as pets (or a combination of these) at your residence, you must obtain a kennel license; however, kennels are only permitted in the mixed use overlay district (US 41 South, M-28 East and Cherry Creek Road business corridor), and with a conditional use permit in the Agriculture / Forestry (AF) zoning district on properties with 20 acres or more.</p> <p>All animal enclosures (fenced in areas, shelters, etc.) must be clean and dry for the animal's protection.</p> |





## Ordinance 69 Nuisance, Noise and Vehicles

|                       |  |
|-----------------------|--|
| Purpose               | To control nuisances, excessive noise, and outdoor parking and storage of vehicles   |
| Rule summary          | <p>Residents and guests are expected to keep trash, blight, and junk off the property and properly dispose of it.</p> <p>Except for snow blowing equipment and noises regulated under the Michigan Right To Farm Act, all residents and visitors cannot make or maintain loud noises near private property that will disturb the neighbors between the hours of 11 PM and 7 AM. This includes:</p> <ul style="list-style-type: none"><li>■ Loud sound equipment, car radios, loudspeakers, or amplifiers (unless it is an emergency)</li><li>■ Constant animal noises (such as continuous dog barking)</li><li>■ Loud exhaust noise (such as cars or snowmobiles with no muffler or an altered muffler)</li><li>■ Business-related noises that can be heard beyond the property line (such as music)</li></ul> <p>Construction-related noises that can be heard beyond the property line are limited to the hours of 7 AM and 9 PM.</p> <p>Seasonal use motor vehicles (such as snowmobiles, ATVs, and plow trucks) not on or in a trailer must be in either the side yard or the rear yard when not in use during the off-season.</p> <p>No parts or vehicles can be stored on someone else’s property without permission.</p> <p>Nothing can be parked that will cause a fire or safety hazard.</p> <p>Repairs on vehicles are permitted if the repair does not disturb the neighbors.</p> <p>Licensed vehicles must be parked in a driveway, not in the front yard.</p> <p>Vehicles over eight feet tall (such as a motor home) must be stored in the rear yard.</p> <p>One vehicle for sale is permitted at a time on a residential property.</p> <p>Farm-type vehicles (such as tractors) cannot be parked in the front yard.</p> <p>No more than three recreational vehicles or trailers or combination may be parked in the road facing yard or the side yards.</p> <p>Temporary occupancy of one recreational vehicle on a parcel used or zoned for residential occupancy is permitted for no more than ninety days per year, unless if the recreational vehicle is used for occupancy during construction of the primary residence on the property.</p> <p>Rental of a recreational vehicle is not permitted.</p> <p>No more than two inoperable vehicles with or without all main component parts attached may be stored outside provided all other requirements of this section are met, and the vehicles are stored only within the side, rear or water-facing yard of the property. No discernable environmental hazard (not limited to leakage of fluids) is allowed.</p> <p>The area of the street facing yard or side yard can be used for vehicle parking if those areas are substantially screened at all times from the view of persons on adjoining roadways and the ground level of adjoining properties by a solid fence or wall, or by terrain, landscaping, or other natural barriers of ample height and density so that the vehicles are barely discernable.</p> |
| Violation consequence | Fine of up to \$500 for each offense; each day will be considered a separate offense   |



## TOWNSHIP LEADERSHIP AND MEETINGS

Attending Township meetings is a great way to get involved in Township government. There are three major Boards and Commissions within the Township: Township Board, Township Planning Commission, and Township Zoning Board of Appeals.

### Township Board

For the benefit of its citizens and according to state law, the Township Board annually adopts a budget. For the health and welfare of its citizens, the Board adopts or rescinds ordinances as needed. Services and programs of the Township are under the direction of the Board.

The Township Board generally meets on the second Monday of the month at 6:00 PM in the Township Fire Hall. Township Board meeting dates are published on the Township web site (click [Information](#) then [2023 Meeting Dates](#) on [chocolay.gov](http://chocolay.gov)). Special meetings are posted as they occur.

### Board of Review

The Board of Review is a local independent board with the responsibility of reviewing the annual assessment roll as established by the Assessor. The Board meets each March to review the assessment roll to ensure compliance with the Michigan General Property Tax Act. The Board of Review has the authority to amend the tax roll based on its own findings or causes found to be valid through an appeal hearing. Once the Board's review is complete, the assessment roll is delivered to the County to begin the equalization process.

The Board of Review is scheduled on specific dates throughout the year. Board of Review meeting dates are published on the Township web site (click [Information](#) then [2023 Meeting Dates](#) on [chocolay.gov](http://chocolay.gov)). Special meetings are posted as they occur.

### Planning Commission

As an appointed body, the Planning Commission shares responsibility for local land use and infrastructure planning with the elected officials on the Township Board of Trustees. The Planning Commission is an independent advisory body that reviews and provides recommendations to the Township Board on applications for zoning ordinance amendments, rezoning requests, conditional use permits, private road applications, site plan reviews, subdivisions and lot splits, and planned unit developments. The Commission develops and update a master plan for Township and makes sure that decisions are consistent with this plan.

The Commission serves as a liaison with the public and other units of government. The Commission provides important leadership in involving community stakeholders in decision making and the Commission does detailed work so the Board can take more efficient and effective action. The Commission represents and works on behalf of the entire community.

The Planning Commission generally meets on the third Monday of the month at 6:00 PM in the Township Fire Hall. Planning Commission meeting dates are published on the Township web site (click [Information](#) then [2023 Meeting Dates](#) on [chocolay.gov](http://chocolay.gov)). Special meetings are posted as they occur.

### Zoning Board of Appeals (ZBA)

The Zoning Board of Appeals (ZBA) hears appeals on administrative zoning decisions. Upon request, the ZBA interprets zoning regulations and renders a decision on applications for dimensional variances (Chocolay Township does not issue use variances). Applicants may appeal ZBA decisions to the Circuit Court.



If a case is scheduled, the Zoning Board of Appeals generally meets on the fourth Thursday of the month at 7:00 PM in the Township Hall. Zoning Board of Appeals meeting dates are published on the Township web site (click [Information](#) then [2023 Meeting Dates](#) on [chocolay.gov](#)). Special meetings are posted as they occur.

## Want to Get Involved?

If you have the desire to serve on one of the Township commissions or wish to work at a precinct during the elections, please check out the descriptions for each on the Township website (click [Information](#) then [Elected and Appointed Officials](#) on [chocolay.gov](#)). If you wish to participate, complete one of the applications found at the bottom of the page.

## RECREATION

Recreation in the Township is one of the main reasons our residents and visitors enjoy the area. There is a wide variety of recreation activities both in the Township and in the region surrounding the Township.

To find Township recreation activities online, click [Resources](#) then [Recreation](#) on the Township website ([chocolay.gov](#)).

To view the Township recreation plan click [Information](#), then [Township Plans](#), then [2020 - 2024 Recreation & Natural Resource Conservation Plan](#) under [Recreation Plans](#) on the Township web site ([chocolay.gov](#)).

## ATV / ORV Trails



The DNR trail commonly known as Trail 417 extending from the entrance to the Ojibway Casino to points east is open for ATV / ORV users. Kawbawgam Pocket Park is a launch site for ATV / ORV access to the trail.

The State forest land, commonly called the Camp Four area (located in the eastern portion of the Township) is open to ATV / ORV traffic to machines trailered to the area.

County and State highways in the Township are closed to ATV / ORV traffic in the Township. You could receive a ticket if law enforcement stops you on these roads.

## Available Recreation Activities



Public and private outdoor activities available in the Township include:

- ♦ Ballfields (baseball / softball and Little League)
- ♦ Basketball
- ♦ Bird / wildlife observation
- ♦ Boat / canoe / kayak
- ♦ Camping (primitive, cabins and RV)
- ♦ Community garden
- ♦ Cross-country skiing
- ♦ Disc golf
- ♦ Fishing / ice fishing (lakes and streams)
- ♦ Fishing pier
- ♦ Golf (9 hole and 18 hole courses)
- ♦ Hockey rink
- ♦ Hunting
- ♦ Interpretive sites (Cherry Creek fish hatchery, MDOT welcome center)
- ♦ Motorized trails (ATV / ORV / snowmobile)
- ♦ Non-motorized trails (biking / hiking)
- ♦ Open space
- ♦ Pickleball
- ♦ Picnic locations
- ♦ Senior Center
- ♦ Snowshoeing
- ♦ Soccer fields
- ♦ Sculpture park (Lakenenland)
- ♦ Swimming (Lake Superior and Chocoley River – no lifeguards!)
- ♦ Tennis
- ♦ Water trail (Hiawatha Water Trail)

## Boat / Canoe / Kayak / Paddleboard Launch Sites



There are several locations in the Township where you can launch a boat, canoe, kayak, or paddleboard. The launches are located at the following locations:

| Site                                       | Access               | Type                               | Comments  |
|--|----------------------|------------------------------------|---|
| DNR Chocoley River<br>Access – M-28        | M-28 East            | canoe, kayak,<br>paddleboard       | ADA-accessible fishing<br>pier<br>carry-down only                                       |
| DNR Chocoley River<br>Access – Mangum Road | Mangum Road          | canoe, kayak,<br>paddleboard       | carry-down only   |
| Green Bay Street Park                      | Green Bay<br>Street  | canoe, kayak,<br>paddleboard       | carry-down only   |
| Green Garden Site                          | Green Garden<br>Road | canoe, kayak,<br>paddleboard       | carry-down only   |
| Jeske Flooding                             | Sand River<br>Road   | boat, canoe, kayak,<br>paddleboard | concrete ramp with no<br>dock   |
| Lake LeVasseur                             | Kawbawgam<br>Road    | boat, canoe, kayak,<br>paddleboard | concrete ramp with no<br>dock   |
| Township Marina                            | Main Street          | boat, canoe, kayak,<br>paddleboard | concrete ramp with dock<br>access to Hiawatha<br>Water trail<br>access to Lake Superior |



## Fishing Locations in the Township



Both cold water and warm water fishing opportunities exist within the Township boundaries. Fishing locations are:

| Location       | Access           | Species  |
|----------------|------------------|--|
| Big Creek      | Public           | Trout  |
| Cedar Creek    | Private          | Trout  |
| Cherry Creek   | Private          | Trout  |
| Chocolay River | Private / public | Northern Pike, panfish, Salmon, steelhead, trout |
| Jeske Flooding | Public           | Northern pike, panfish                           |
| Kawbawgam Lake | Public           | Northern pike, panfish                           |
| Lake LeVasseur | Public           | Northern pike, panfish                           |
| Sand River     | Private / public | Bass, Northern pike, panfish,                    |
| Silver Creek   | Private          | Trout  |

See the Michigan DNR *Fishing* web page (<https://www.michigan.gov/dnr/things-to-do/fishing>) for fishing and fishing license information and the Michigan DNR *Weekly fishing report* web page (<https://www.michigan.gov/dnr/things-to-do/fishing/weekly>) for fishing updates.

## Non-Motorized Trails



The Iron Ore Heritage Trail is a 47 mile year-round multi-use trail that extends from Kawbawgam Road at the entrance to the Ojibwa Casino west to Republic. The portion of the trail in the Township is also open to snowmobile traffic during the winter season. See [ironoreheritage.com](http://ironoreheritage.com) for trail information.

The US 41 bike path extends from the MDOT Welcome Center to the intersection of US 41 South and M-28 East, crosses M-28 East and extends to the Iron Ore Heritage Trail. This extension connects to the Iron Ore Heritage Trail at the Welcome Center.

## Organized Sports Leagues

There are three organized sports leagues that use facilities in the Township. They are:

| League  | Where They Play  | Web  | Facebook                        |
|---|--|--|---------------------------------|
|  | Chocolay Co-ed Softball League<br>Beaver Grove Lion's Field                  |  | Chocolay Coed Softball          |
|  | Superiorland Soccer Association<br>Beaver Grove Silver Creek Recreation Area | <a href="http://www.superiorlandsoccer.com">www.superiorlandsoccer.com</a> | Superiorland Soccer Association |



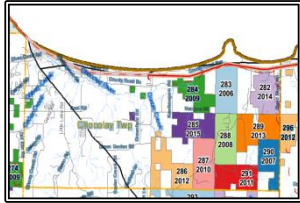
Marquette Little League

Silver Creek Recreation Area

[www.marquettelittleleague.net](http://www.marquettelittleleague.net)

Marquette Little League

## Public Hunting



Hunting is not permitted on Township public properties; however, there are several State locations for hunting within the Township.

Hunting locations are:

| Location          | Species   |
|-------------------|-----------|
| DNR / State lands | Multiple  |
| Jeske Flooding    | waterfowl |
| Lake LeVasseur    | waterfowl |

See the Michigan DNR *Hunting* web page ([www.michigan.gov/dnr/things-to-do/hunting](http://www.michigan.gov/dnr/things-to-do/hunting)) for hunting and hunting license information.

## Senior Center



The Chocolay seniors meet at the Township Hall on Tuesdays and Thursdays from 1 PM to 4 PM. The seniors are an active organization; activities include cribbage, checkers, board games, sewing / crocheting, potlucks, birthday celebrations, and once-a-month travel to local area attractions.

Click [Resources](#) then [Seniors](#) on the Township website ([chocolay.gov](http://chocolay.gov)) to see a calendar of activities and information.

## Snowmobile Trail



The DNR permits snowmobiles on portions of the Iron Ore Heritage Trail through the Township. Please note the speed limits as you approach the residential area from the Welcome Center heading east, and from Lion's Field heading west.

Kawbawgam Pocket Park is a launch site for snowmobile access to the DNR trail (trail 417) that extends to Manistique.

Snowmobiles are permitted on the trails from December 1 through March 31.

## Water Trail



Part of the Hiawatha Water Trail on Lake Superior passes along the northern border of the Township. The trail, stretching from Grand Marias to the Huron Mountain Club near Big Bay, is designed for kayaking or canoeing on the lake.

The trail can be accessed from the Township marina located on Main Street. Please check weather conditions before kayaking or canoeing on Lake Superior.

See [hiawathawatertrail.org](http://hiawathawatertrail.org) for information on the water trail.

## Recreation Attractions in and Around the Area



In Marquette, Northern Michigan University has a variety of sports schedules (such as basketball, football, hockey, lacrosse, and volleyball) that provide local entertainment. Outdoor activities in the Marquette area include visiting Presque Isle, climbing Hogback Mountain and Sugarloaf Mountain, and mountain biking and downhill skiing at nearby Marquette Mountain. The public can view and photograph the iron ore boats that frequent the docks in the upper harbor in Marquette for iron ore loading.

Regional outdoor attractions include: Pictured Rocks National Lakeshore, Seney National Wildlife Refuge, Hiawatha National Forest, Lake Superior State Forest, state parks (including Van Riper, Craig Lake, Laughing Whitefish, Fayette and others), numerous waterfalls, lighthouses and miles of beautiful sand beaches.

The area is a popular destination for fall color tours and lighthouse tours.

## TRANSPORTATION

### Airports

There are two commercial airports near the Township. K I Sawyer Airport is located in K I Sawyer, about 15 miles from the Township office. American Airlines (operated by Envoy Air) and Delta Airlines (operated by Endeavor Air) service this airport, with nearby charter service available. Delta County Airport is located in Escanaba, about 65 miles from the Township office, with service from Delta Airlines.

### Public Transit



Chocolay Township provides the connection between two County-wide public transit systems that operate in the Township: MarqTran (Marquette County Transit) and ALTRAN (Alger County Transit). See [marq-tran.com](http://marq-tran.com) for the MarqTran schedule and [www.altranbus.com](http://www.altranbus.com) for the ALTRAN schedule.

Lyft, Uber and commercial taxi services are available in the area that provide transportation to other areas in the Upper Peninsula.

### Public Highways

Two main highways cross the Township. US 41 runs north and south through the Township. Heading north, US 41 provides a connection to Marquette and other points in the Upper Peninsula and ends north of Copper Harbor. Heading south, US 41 connects to a point between Gladstone and Escanaba on US 2, and eventually ends in Miami, Florida. M-28 runs east to west through the Township and brings traffic from Munising and Marquette.

Within the region, the highway transportation corridor of national and international significance is US 2 which runs from the Mackinaw City / St. Ignace area west to Wisconsin. The corridor of statewide significance is US 41 / M-28 which runs from Sault Ste. Marie west through the Township and Marquette to Copper Harbor and other destinations in the central and western Upper Peninsula.

## Commercial Ports

There are commercial shipping ports located in Marquette and Escanaba. Ore freighters frequent both ports and are a source of viewing entertainment during the shipping season.

## Rail Service

There are no passenger rail services in the region, but freight rail service is available.

## EDUCATION

Cherry Creek Elementary, part of the [Marquette Area Public School](#) system, is located in the Township, and provides education for kindergarten through fifth grade students.

Marquette Area Public Schools provides education for kindergarten through twelfth grade throughout the Marquette area.

Upper Peninsula post-secondary educational institutions include:

- Bay College (Escanaba)
- Bay Mills Community College (Brimley)
- Finlandia University (Hancock)
- Gogebic Community College (Ironwood)
- Keeweenaw Bay Ojibwa Community College (L'Anse)
- Lake Superior State University (Sault Ste. Marie)
- Michigan Technological University (Houghton)
- Northern Michigan University (Marquette)

## LOCAL BUSINESSES

There are over 100 businesses located in the Township that provide a wide range of sales and services for Township residents and visitors.

Please help support these businesses by buying local.

## VOTING INFORMATION

Under Michigan law, a person is automatically registered to vote when that person obtains a driver's license or personal identification card from the Secretary of State office, unless that person declines the registration.

There are two local voting precincts in the Township. During scheduled elections both Precinct 1 and Precinct 2 vote at Silver Creek Church on Silver Creek Road.

New residents in the Township can register to vote at the Township office during regular Township hours or online through the State of Michigan ( [mvic.sos.state.mi.us](http://mvic.sos.state.mi.us) ).

Please call the Township office for registration and absentee voter information.



## I WANT TO BUILD OR REMODEL ...

### Building or Remodeling in the Township

If you are building or adding on to a current structure on your property, do the following steps for your project:

1. Contact the Township Planning / Zoning department (906.249.1448) to determine if you need a permit or if other requirements must be met before you begin. See the *Do I Need a Permit* section below to determine if you need a permit for your project.
2. Check with the Marquette County Health Department (906.475.9977) to determine if your septic and well requirements are up-to-date and if your project will affect either one.
3. Contact the Marquette Building Code Department (906.225.8180, option 0) to determine if your project will meet County building codes and other County requirements.
4. If your property is on the river, contains wetlands, or is on the lakeshore, contact Michigan EGLE (906.228.4853) or the Army Corps of Engineers (906.228.2833) to determine if you need additional permits.
5. If the answer to step one was yes, obtain a *Zoning Compliance* permit from the Township and pay the fee for the permit. Fees are:

| Project  | Fee     |
|--|---------|
| Addition / alteration                              | \$40.00 |
| Deck / porch                                       | \$20.00 |
| New structure (100 square feet to 200 square feet) | \$10.00 |
| New structure (200 square feet or greater)         | \$40.00 |

The permit application can be found on the Township web site (click [Resources](#), then [Forms and Documents](#), then [Planning and Zoning](#), then [Zoning Compliance Permit](#) on [chocolay.gov](http://chocolay.gov)).

6. If necessary, obtain a building permit from the Marquette County Building Codes department.
7. Call Miss Dig at 811 or submit a request online ([missdig811.org](http://missdig811.org)) to determine where, if any, unground utilities might be located that might be in your project area.
8. Begin your project!

### Do I Need a Permit?

Depending on the size of the structure, Chocolay Township requires a *Zoning Compliance* permit for structures to be located or built on properties located in the Township. For those structures, a building permit from Marquette County Building Codes may also be required, depending on the size of the structure, and if the structure will have utilities (electric, gas or water) as part of the structure.

A Township *Zoning Compliance* permit is required if the project is a(n):

- Addition on to an existing structure
- Alteration (if the footprint or height of the structure expands)
- Deck or porch if it is 100 square feet or larger
- Structure that is 100 square feet or larger

A *Zoning Compliance* permit is not required for remodeling (windows, siding, roof, etc.) unless the footprint of the structure is either expanded out or up.



The table below will give you the necessary information regarding your permit requirements for structures. Contact the Township Zoning Administrator (906.249.1448) if you are not sure if your project will require a *Zoning Compliance* permit.

| Structure size   | Permit Required   |                                 |
|--|-------------------|---------------------------------|
|  | Chocolay Township | Marquette County Building Codes |
| Under 100 square feet with no utilities (electric, gas or water)<br>Examples: small pre-built utility shed or small deck                           | No                | No                              |
| Under 100 square feet with utilities (electric, gas or water)<br>Examples: small utility shed or small deck with a permanent electric light        | No                | Yes                             |
| 100 square feet to 200 square feet with no utilities (electric, gas or water)<br>Examples: large shed or large deck                                | Yes               | No                              |
| 100 square feet to 200 square feet with utilities (electric, gas or water)<br>Examples: large shed or large deck with permanent electric lighting) | Yes               | Yes                             |
| 200 square feet or larger<br>Examples: house or two-car garage   | Yes               | Yes                             |

## Structure Setbacks

All structures, including those that are modified, are required to meet the setback requirements for the zoning district where the structure will be located. Additionally, if a designated waterway or body of water (such as the Chocolay River, Cherry Creek, Lake Kawbawgam or Lake Superior) borders or crosses the property, a minimum setback of 100 feet from the water is required. Setbacks for the individual zoning districts are:

| District | Front | Side            | Rear | Height          | Minimum Lot Size                | Minimum Lot Width |
|----------|-------|-----------------|------|-----------------|---------------------------------|-------------------|
| AF       | 30    | 30              | 30   | 1               | 20 acres                        | None              |
| C        | 30    | 5               | 20   | 30 <sub>6</sub> | 25,000 square feet              | 125               |
| I        | 40    | 5               | 20   | 30 <sub>6</sub> | 1 acre                          | 150               |
| MFR      | 30    | 30              | 30   | 30 <sub>6</sub> | 20 acres                        | None              |
| MP       | 40    | 20              | 30   | 30              | None                            | None              |
| PUD      | 5     | 5               | 5    | 5               | 5 acres                         | 300               |
| R-1      | 30    | 10 <sub>2</sub> | 35   | 30 <sub>6</sub> | 25,000 square feet <sub>4</sub> | 125               |
| R-2      | 25    | 5               | 25   | 30 <sub>6</sub> | 10,500 square feet              | 50                |
| WFR      | 30    | 10 <sub>2</sub> | 30   | 30 <sub>6</sub> | 25,000 square feet              | 125               |

### Table Footnotes

1. Height at any point on a structure shall not exceed the horizontal distance to any lot line.
2. A detached accessory building not exceeding 14 feet in height and not exceeding 720 square feet may be located within six feet of a side lot line and 20 feet from a rear lot line.
3. Lot width shall be measured at the location of the front setback line.
4. 18,750 sq. ft. where lot is served by public sewer and/or water supply.



5. Setbacks and height limits are to be determined as required by the original zoning district. Any modifications are subject to the final approval of the Final Development Plan.
6. No detached building shall exceed the permitted height for the zoning district.

Please refer to the Township *Zoning Ordinance* for additional information on setbacks and other considerations. To access the *Zoning Ordinance* on the Township website, click [Resources](#), then [Ordinances and Maps](#), then [Township Zoning Ordinance](#) on [chocolay.gov](http://chocolay.gov).

## Fence Permit

If you want to put a permanent fence on your property, you will need a *Fence Permit* from the Township. The fence must be placed on your property with enough space to do maintenance on the outside of the fence without crossing on to your neighbor's property (generally about two feet from the property line), unless you have a letter from the neighbor(s) that says you have permission to put the fence on the lot line and they will share the fence maintenance.

The fee for a fence permit is \$20.00. The permit application can be found on the Township web site (click [Resources](#), then [Forms and Documents](#), then [Planning and Zoning](#), then [Fence Permit](#) on [chocolay.gov](http://chocolay.gov)).

Please refer to the Township *Zoning Ordinance* for additional information on fence height, materials, and other considerations. To access the *Zoning Ordinance* on the Township website, click [Resources](#), then [Ordinances and Maps](#), then [Township Zoning Ordinance](#) on [chocolay.gov](http://chocolay.gov).

## I WANT TO CONNECT TO THE SEWER SYSTEM ...

If you are located along the Township sewer system, you are required to connect to the system if you are a new builder or if your septic system fails and your connection will be within 200 feet of the system.

To connect, follow these steps:

1. Contact the Township Department of Public Works (DPW) to obtain a sewer permit.
2. Install cleanouts every 100 feet and / or upstream of every 90 degree bend.
3. Make sure your installation follows all Marquette County, State of Michigan, and Federal regulations.
4. Call the Township for inspection prior to filling in your open trench. A Township DPW employee will measure, map, and check the installation.
5. Complete the project.

Contact the Township Department of Public Works (906.249.1448) if you have questions about connecting to the sewer system.

## I WANT TO HAVE A HOME BUSINESS ...

If you want to start a business in your home, you can with a *Home Occupation* permit from the Township.

There are two levels of home occupations permits, Type I and Type II. A Type I permit is for those home businesses that will not generate a lot of traffic, noise, smells or other disturbances for the neighbors (such as a home office or Internet-based business). The Township Zoning Administrator approves the permit request for this type of business.

A Type II permit is required for activities that generally would impact the neighborhood in a noticeable way (such as a daycare, hair salon, or high traffic volume). This business type requires a *Conditional Use* permit, which means you must have approval from the Township Planning Commission to do this business in your home.

Please see *Section 6.9* in the Township *Zoning Ordinance* for additional information. To access the *Zoning Ordinance* on the Township website, click [Resources](#), then [Ordinances and Maps](#), then [Township Zoning Ordinance](#) on [chocolay.gov](http://chocolay.gov).



Contact the Township Zoning Administrator (906.249.1448) if you want to start or update a home business.

## ***I WANT TO RENT MY PROPERTY ...***

If you want to rent your property (or a portion of it), you can with a completed *Rental Property Registration* on file with the Township. This free registration tells the Township you are renting your property, and the Township will use the registration of your property as a way for the police, fire, emergency, and other government personnel to reach you in the event of an emergency.

The registration is renewed every year beginning in March and the renewal is used to update Township records regarding rentals.

You can change the registration at any time if you decide you no longer wish to rent your property.

Further information on the regulations on rentals can be found in Ordinance 68, *Rentals*. You can access the ***ordinance*** on the Township website (click [Resources](#), then [Ordinances and Maps](#), then [General](#), then [68 – Rentals](#) on [chocolay.gov](http://chocolay.gov)).

The *Rental Property Registration* form can be found on the Township web site (click [Resources](#), then [Forms and Documents](#), then [Planning and Zoning](#), then [Rental Property Registration](#) on [chocolay.gov](http://chocolay.gov)).

Contact the Township Zoning Administrator (906.249.1448) if you have questions about renting your property.

